

UWGG/GOJ
STRIGINO

JEPPESEN NIZHNY NOVGOROD, RUSSIA

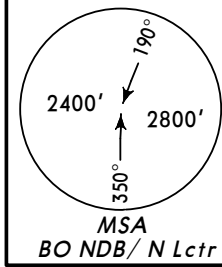
24 APR 09 **(10-2A)** **Eff 7 May**

STAR

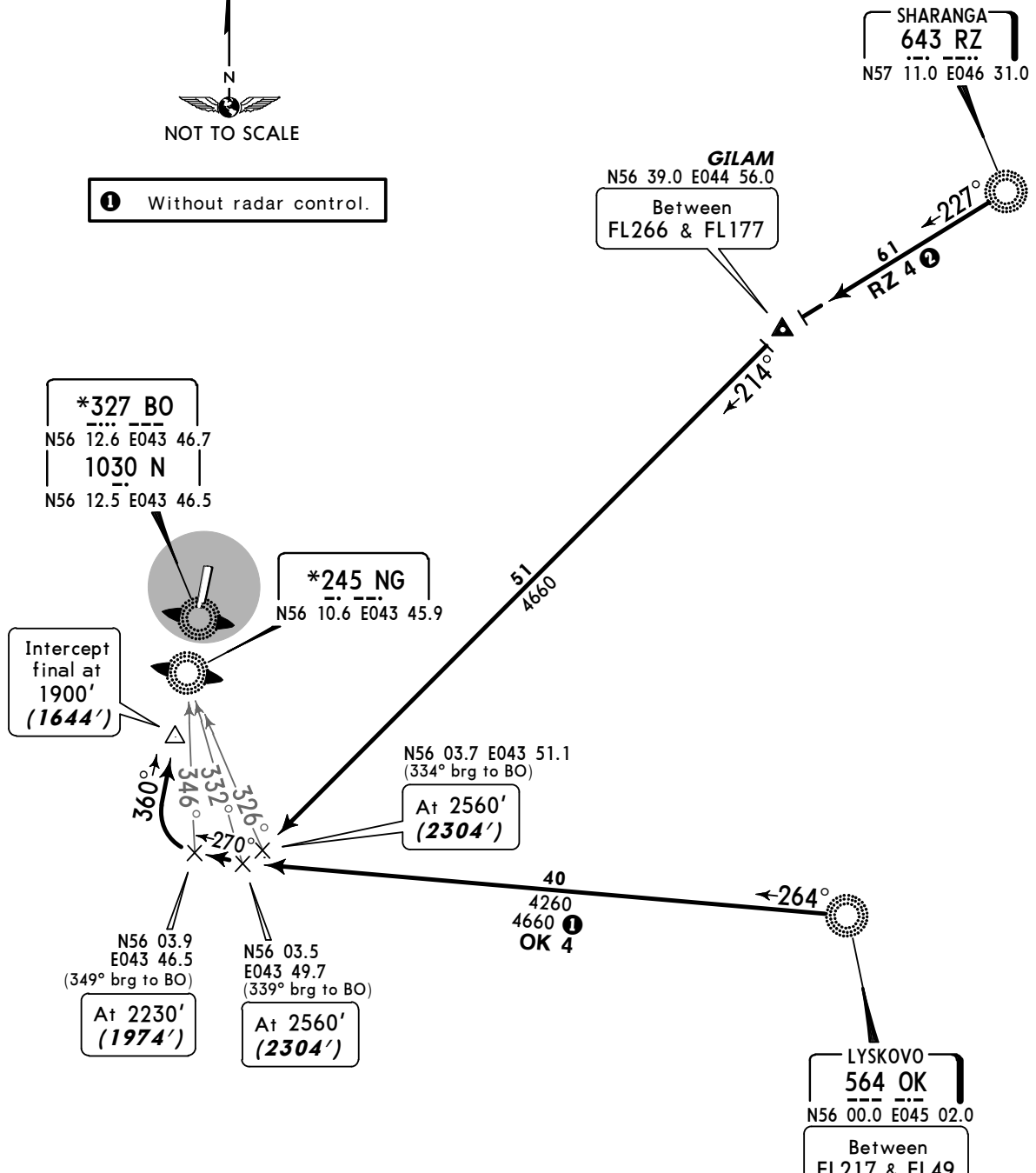
ATIS 127.8	Apt Elev 256'	Alt Set: MM (hPa on request) QNH on request Trans level: FL39 Trans alt: 2890' (2634')	(QFE)
---------------	------------------	--	--------------

OK 4, RZ 4
RWYS 36L/R ARRIVALS
 FROM EAST

2 By ATC



1 Without radar control.



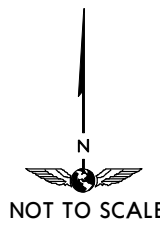
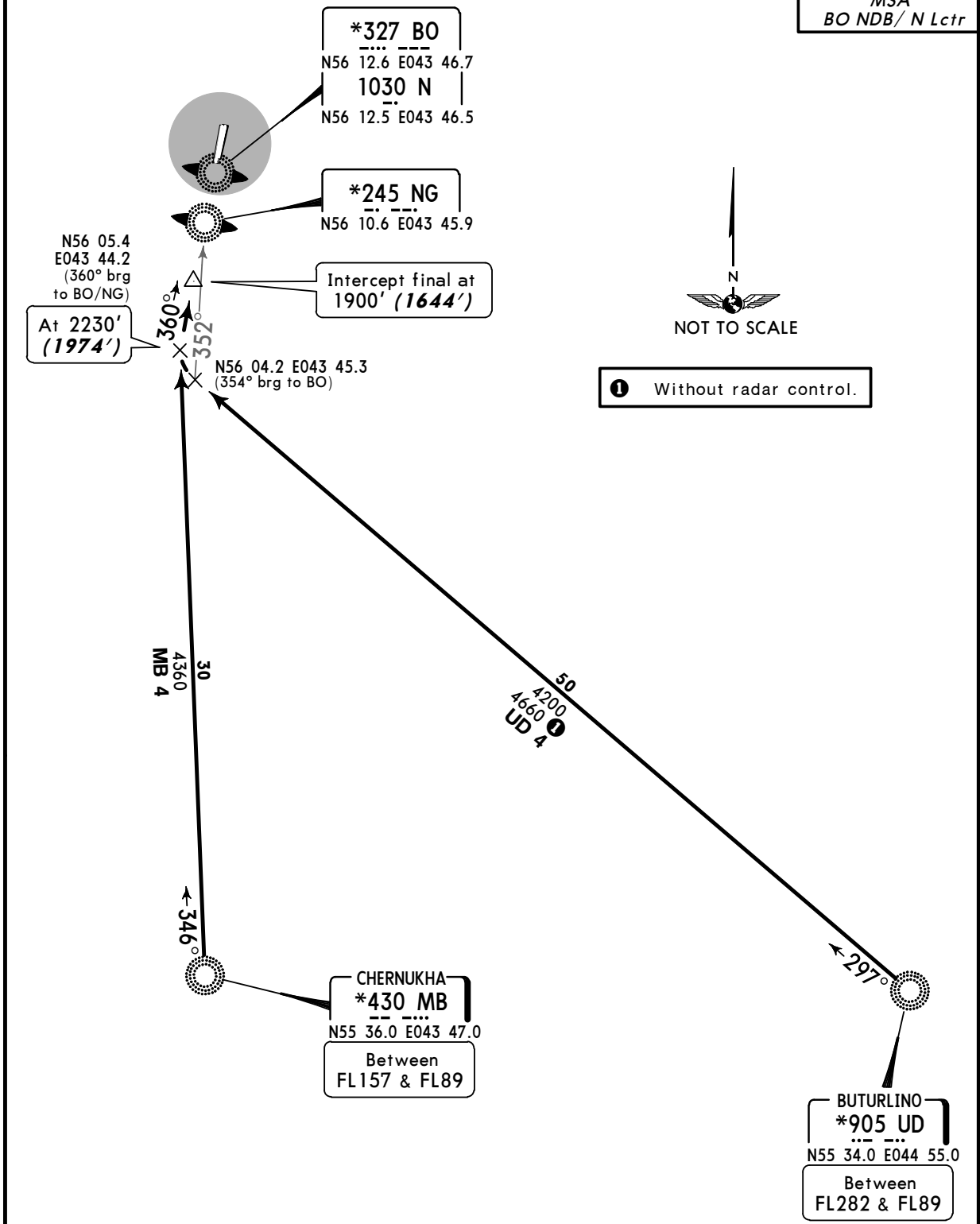
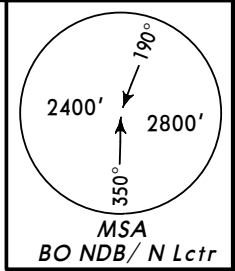
FL CONVERSION		ALT/HEIGHT CONVERSION	
FL266	FL8100m	QNH	(QFE)
FL217	FL6600m	2890'	(2634' - 800m)
FL177	FL5400m	2560'	(2304' - 700m)
FL49	FL1500m	2230'	(1974' - 600m)
FL39	FL1200m	1900'	(1644' - 500m)

UWGG/GOJ
STRIGINO

JEPPESEN NIZHNY NOVGOROD, RUSSIA
24 APR 09 **10-2C** **Eff 7 May** **STAR**

ATIS 127.8	Apt Elev 256'	Alt Set: MM (hPa on request) QNH on request Trans level: FL39 Trans alt: 2890' (2634')	(QFE)
---------------	------------------	---	-------

MB 4, UD 4
RWYS 36L/R ARRIVALS
FROM SOUTH



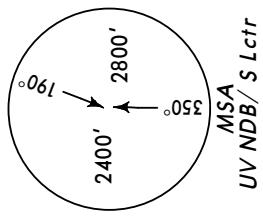
1 Without radar control.

FL CONVERSION		ALT/HEIGHT CONVERSION	
FL282	FL8600m	QNH	(QFE)
FL157	FL4800m	2890'	(2634' - 800m)
FL89	FL2700m	2230'	(1974' - 600m)
FL39	FL1200m	1900'	(1644' - 500m)

UWGG/GOJ
STRIGINO

JEPPESEN NIZHNY NOVGOROD, RUSSIA
 17 OCT 08 **10-3** **SID**

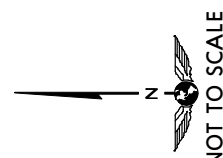
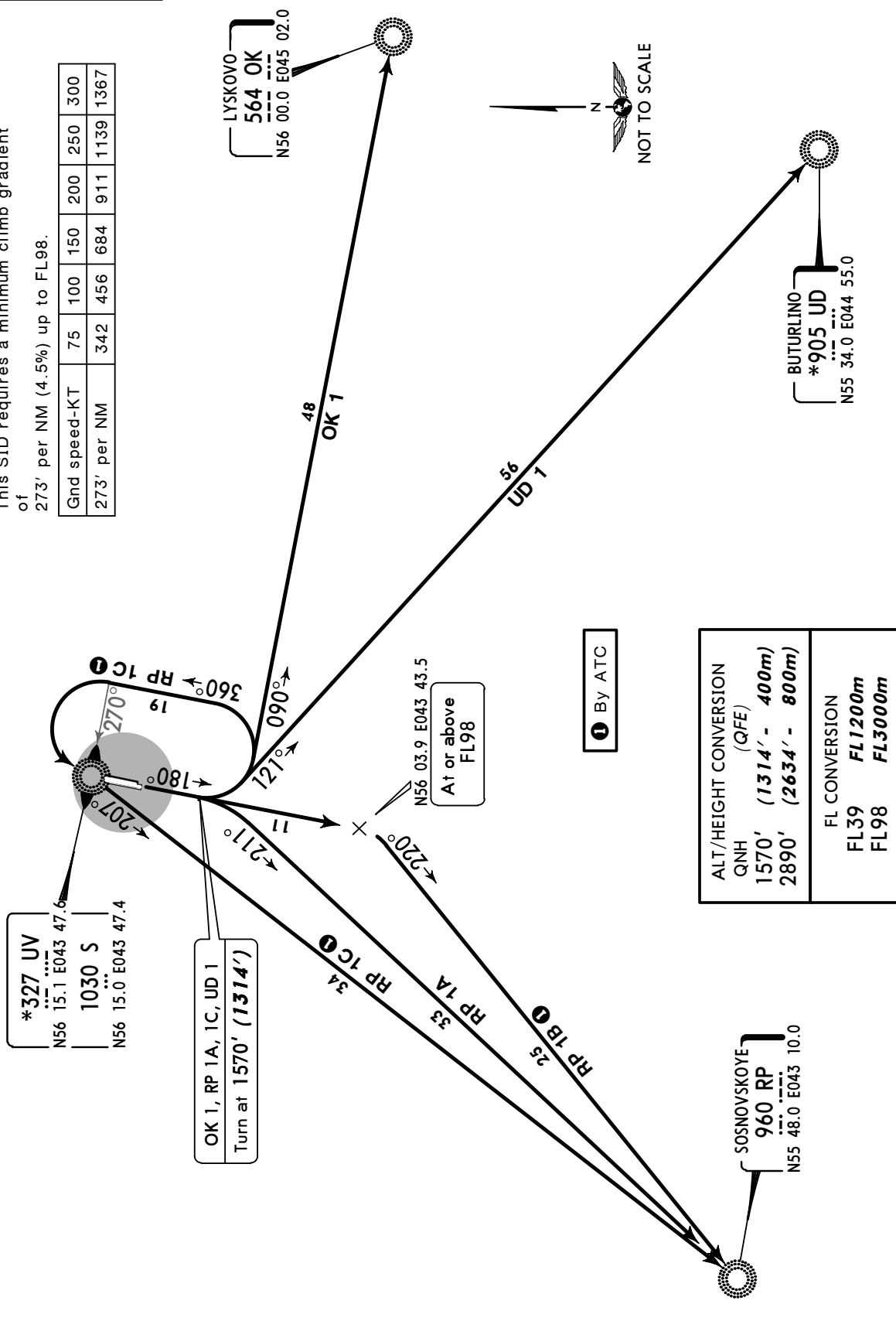
Apt Elev **256'** QNH on request **(QFE)** Trans level: FL39 Trans alt: 2890' **(2634')**
 Crossing at airway entry points by ATC.



OK 1, RP 1A, RP 1B, RP 1C, UD 1
RWYS 18L/R DEPARTURES

RP 1B
 This SID requires a minimum climb gradient of 273' per NM (4.5%) up to FL98.

Gnd speed-KT	75	100	150	200	250	300
273' per NM	342	456	684	911	1139	1367



***327 UV**
 N56 15.1 E043 47.6
1030 S
 N56 15.0 E043 47.4

OK 1, RP 1A, 1C, UD 1
 Turn at **1570' (1314')**

N56 03.9 E043 43.5
 At or above
FL98

1 By ATC

ALT/HEIGHT CONVERSION QNH (QFE)	1570' (1314' - 400m)
	2890' (2634' - 800m)
	FL CONVERSION FL39 FL1200m FL98 FL3000m

SOSNOVSKOYE
960 RP
 N55 48.0 E043 10.0

UWGG/GOJ
STRIGINO

17 OCT 08 **(10-3A)**

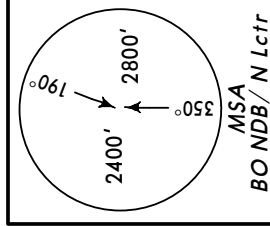
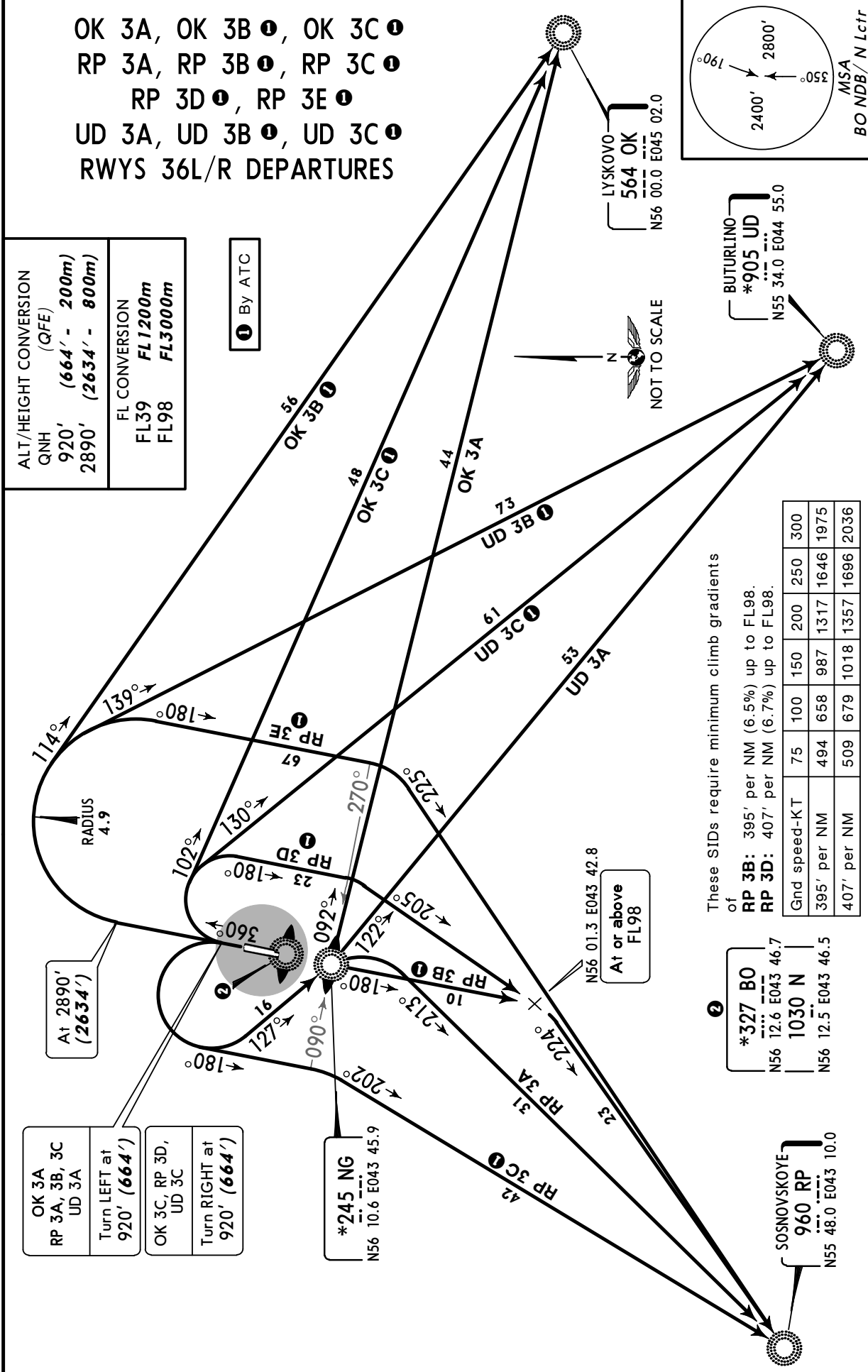
SID

Apt Elev **256'** QNH on request **(QFE)** Trans level: FL39 Trans alt: 2890' **(2634')**
 Crossing at airway entry points by ATC.

OK 3A, OK 3B ①, OK 3C ①
RP 3A, RP 3B ①, RP 3C ①
RP 3D ①, RP 3E ①
UD 3A, UD 3B ①, UD 3C ①
RWYS 36L/R DEPARTURES

ALT/HEIGHT CONVERSION	
QNH	(QFE)
920'	(664' - 200m)
2890'	(2634' - 800m)
FL CONVERSION	
FL39	FL1200m
FL98	FL3000m

① By ATC



These SIDs require minimum climb gradients of
 of
RP 3B: 395' per NM (6.5%) up to FL98.
RP 3D: 407' per NM (6.7%) up to FL98.

Gnd speed-KT	75	100	150	200	250	300
395' per NM	494	658	987	1317	1646	1975
407' per NM	509	679	1018	1357	1696	2036

② ***327 BO**
 N56 12.6 E043 46.7
1030 N
 N56 12.5 E043 46.5

OK 3A, 3B, 3C
 RP 3A, 3B, 3C
 UD 3A
 Turn LEFT at
 920' (664')

OK 3C, RP 3D,
 UD 3C
 Turn RIGHT at
 920' (664')

***245 NG**
 N56 10.6 E043 45.9

***327 BO**
 N56 01.3 E043 42.8
 At or above
 FL98

SOSNOVSKOYE
 960 RP
 N55 48.0 E043 10.0

UWGG/GOJ

Apt Elev **256'**
N56 13.8 E043 47.0



JEPPESEN

NIZHNY NOVGOROD, RUSSIA

6 NOV 09

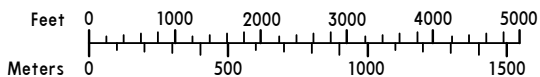
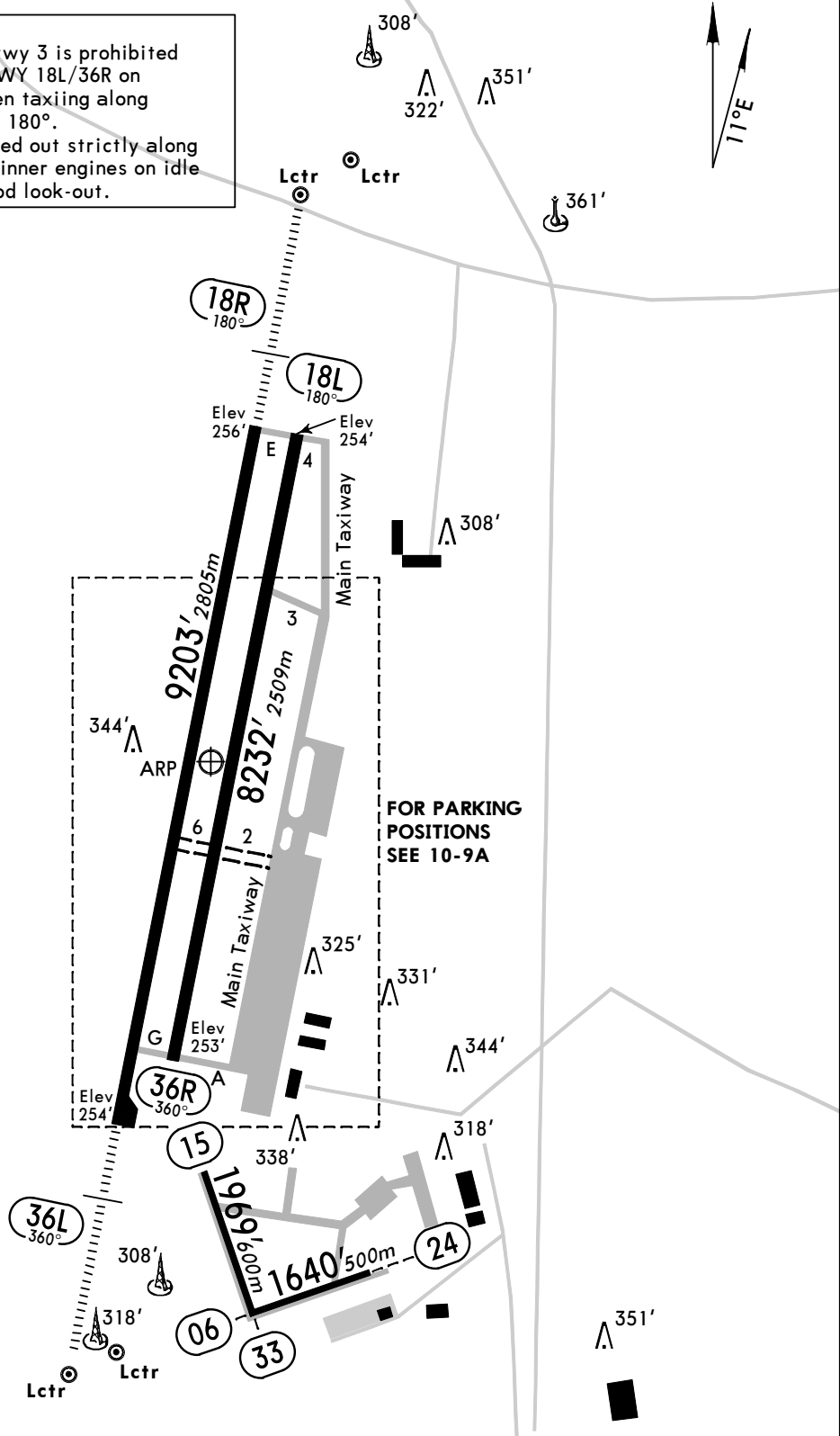
10-9

Eff 19 Nov

STRIGINO

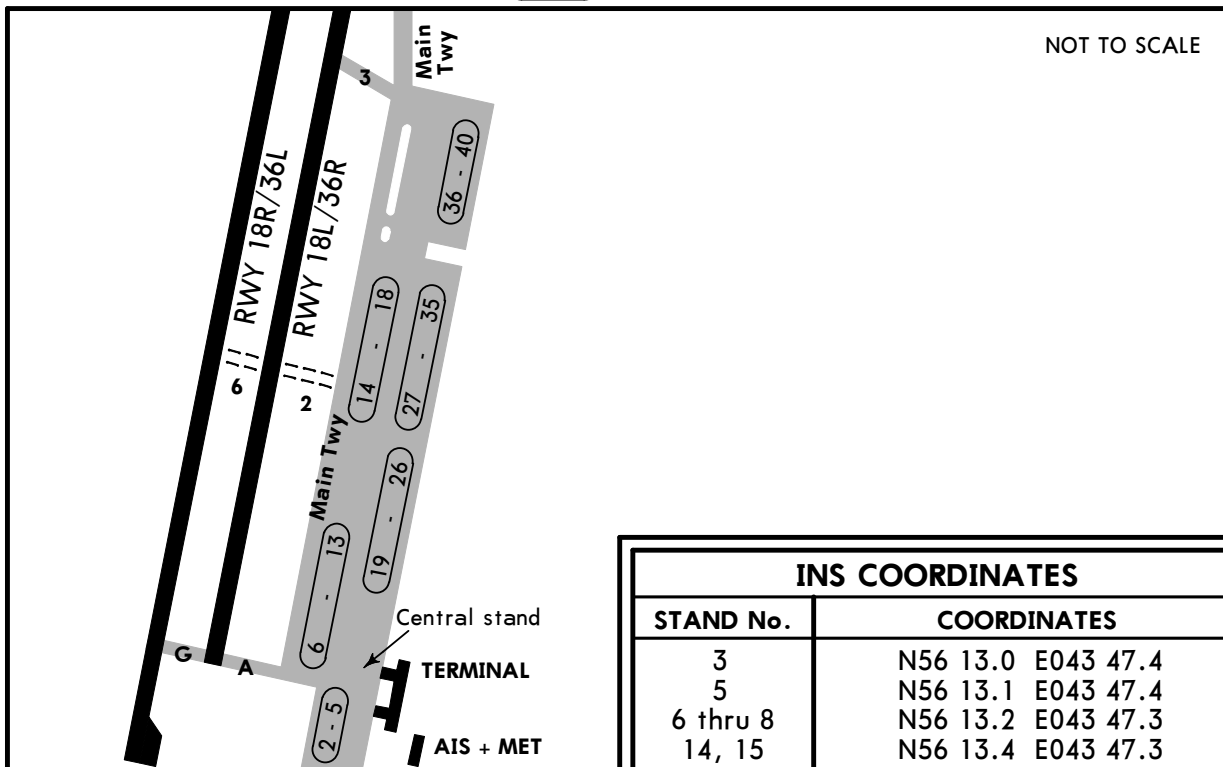
ATIS 127.8	NIZHNY Taxiing (GND) 121.8	Tower 120.4
----------------------	--------------------------------------	-----------------------

Birds.
Turning of acft onto twy 3 is prohibited when taxiing along RWY 18L/36R on heading 180° and when taxiing along main TWY on heading 180°. Taxiing shall be carried out strictly along twy center line with inner engines on idle power and crew's good look-out.



UWGG/GOJ

JEPPESEN NIZHNY NOVGOROD, RUSSIA
6 NOV 09 (10-9A) Eff 19 Nov STRIGINO



INS COORDINATES	
STAND No.	COORDINATES
3	N56 13.0 E043 47.4
5	N56 13.1 E043 47.4
6 thru 8	N56 13.2 E043 47.3
14, 15	N56 13.4 E043 47.3

RWY		USABLE LENGTHS			WIDTH
		Threshold	LANDING BEYOND Glide Slope	TAKE-OFF	
06					72' 22m
24					
15					72' 22m
33					
18L	HIRL (60m)				148' 45m
36R					
18R	HIRL (60m) HIALS		8104' 2470m		148' 45m
36L			8360' 2548m		

ADDITIONAL RUNWAY INFORMATION

TAKE-OFF		
AIR CARRIER (JAA) Rwys 18 L/R, 36 L/R		
	LVP must be in force RCLM (DAY only) or RL	RCLM (DAY only) or RL
A		
B	250m	400m
C		
D	300m	

UWGG/GOJ
STRIGINO

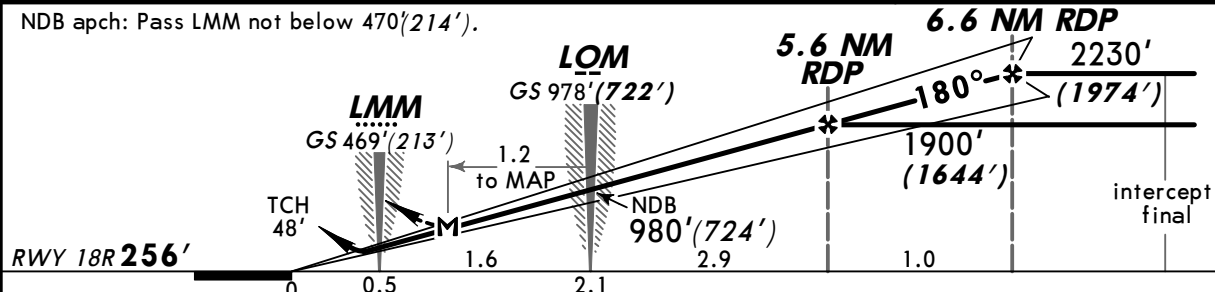
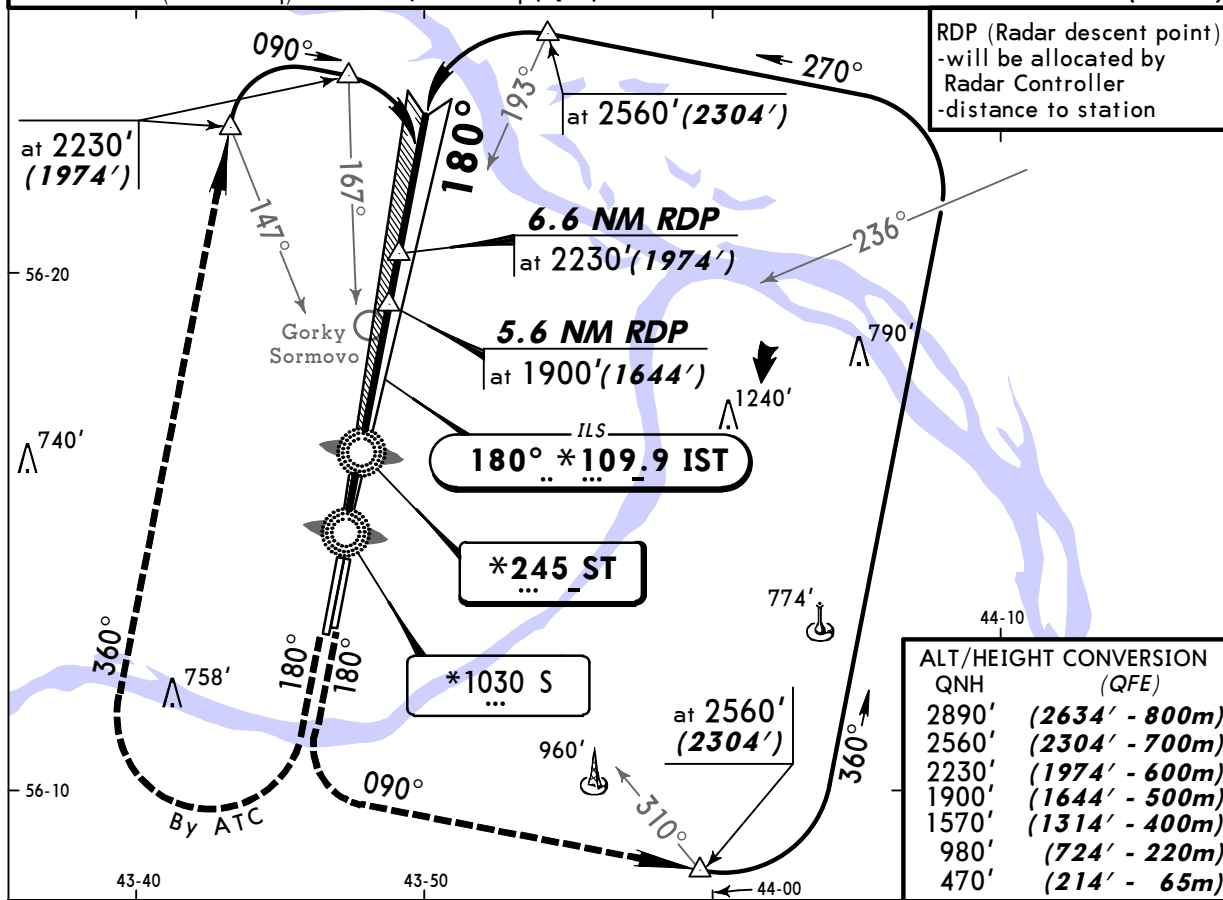
JEPPesen NIZHNY NOVGOROD, RUSSIA
14 AUG 09 **(11-1)** Eff 27 Aug ILS or 2 NDB Rwy 18R

BRIEFING STRIP™

ATIS 127.8		NIZHNY Approach 124.7 126.0		NIZHNY Radar 120.8	NIZHNY Tower 120.4	Ground 121.8
LOC IST *109.9	Final Apch Crs 180°	GS LOM 978' (722')	ILS DA(H) 456' (200')	Apt Elev 256'		<p>MSA S Lctr</p>
NDB ST *245		Minimum Alt (CONDITIONAL) Refer to Profile	NDB MDA(H) 600' (344')	RWY 256'		

MISSED APCH: LEFT HAND: Climb on 180° to 1570' (1314'), then turn LEFT onto 090° climbing to 2560' (2304'), then as directed.
RIGHT HAND: Climb on 180° to 1570' (1314'), then turn RIGHT onto 360° climbing to 2230' (1974'), then as directed.

Alt Set: MM (hPa on req) QNH on req (QFE) Trans level: FL 39 Trans alt: 2890' (2634')



Gnd speed-Kts	70	90	100	120	140	160		Refer to Missed Apch above
ILS GS 3.00° or NDB Desc Grad 5.2%	377	485	539	647	755	862		
LOM to MAP	1.2	1:02	0:48	0:43	0:36	0:31		

STRAIGHT-IN LANDING RWY 18R					
ILS DA(H) 456' (200')		LOC (GS out)		NDB MDA(H) 600' (344')	
FULL	ALS out			ALS out	
A		NOT AUTH			
B	800m	1200m		1200m	1600m
C					
D				1600m	2000m

PANS OPS

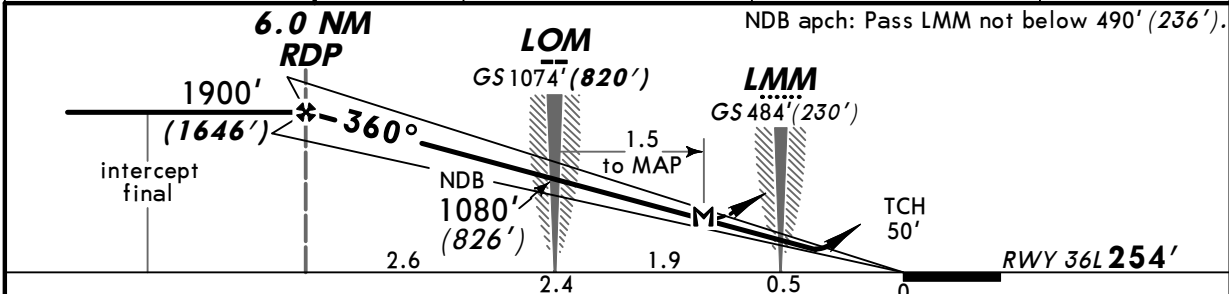
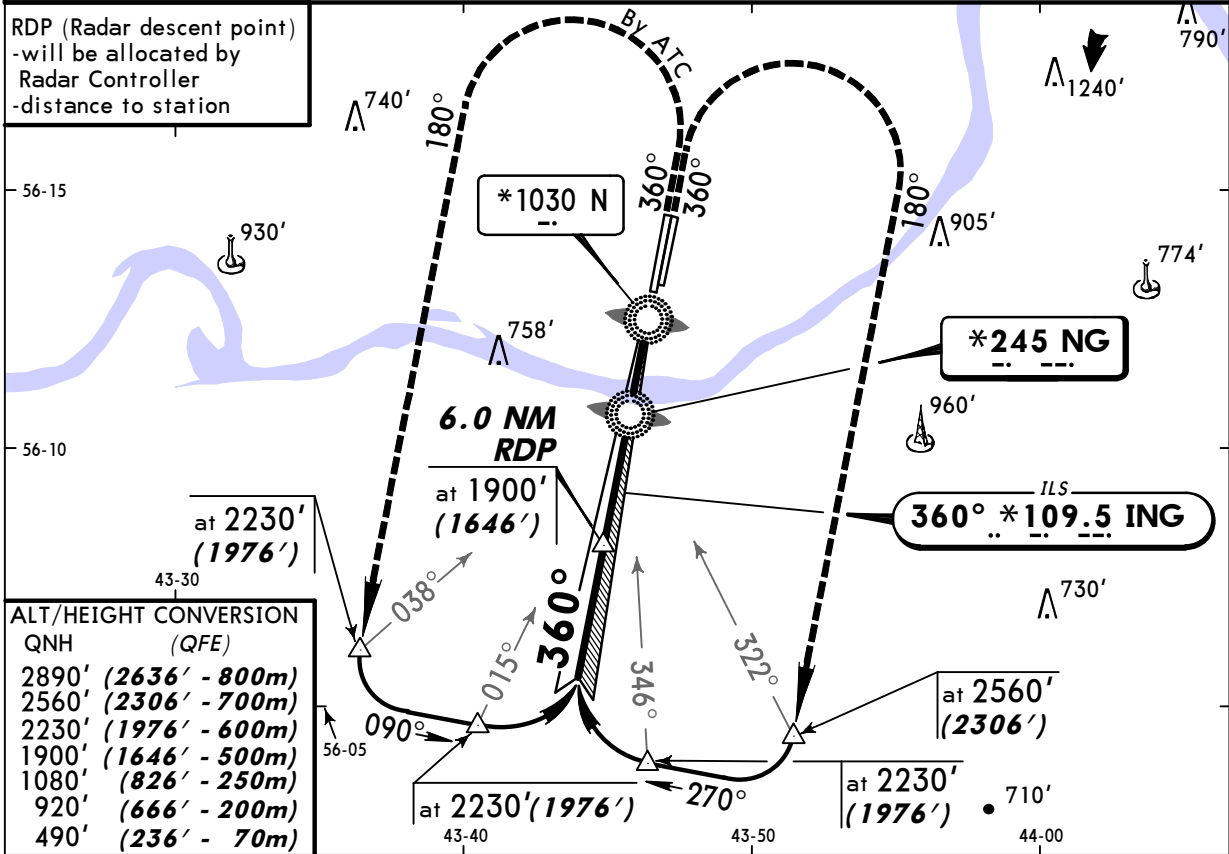
UWGG/GOJ
STRIGINO

JEPPESEN NIZHNY NOVGOROD, RUSSIA
14 AUG 09 (11-2) Eff 27 Aug ILS or 2 NDB Rwy 36L

ATIS 127.8		NIZHNY Approach 124.7 126.0		NIZHNY Radar 120.8	NIZHNY Tower 120.4	Ground 121.8
BRIEFING STRIP™	LOC ING *109.5	Final Apch Crs 360°	GS LOM 1074' (820')	ILS DA(H) 454' (200')	Apt Elev 256' RWY 254'	
	NDB NG *245		Minimum Alt 6.0 NM RDP 1900' (1646')	NDB MDA(H) (CONDITIONAL) 610' (356')		
<p>MISSED APCH: RIGHT HAND: Climb on 360° to 920' (666'), then turn RIGHT onto 180° climbing to 2560' (2306'), then as directed. LEFT HAND: Climb on 360° to 920' (666'), then turn LEFT onto 180° climbing to 2230' (1976'), then as directed.</p>						

Alt Set: MM (hPa on req) QNH on req (QFE) Trans level: FL 39 Trans alt: 2890' (2636')

RDP (Radar descent point)
-will be allocated by
Radar Controller
-distance to station



Gnd speed-Kts	70	90	100	120	140	160	HIALS	Refer to Missed Apch above
ILS GS 3.00° or NDB Desc Grad 5.2%	377	485	539	647	755	862		
LOM to MAP	1.5	1:17	1:00	0:54	0:45	0:39		

PANS OPS	ILS		STRAIGHT-IN LANDING RWY 36L		NDB	
	DA(H) FULL	ALS out	LOC (GS out)	With 6.0 NM RDP MDA(H)	W/o 6.0 NM RDP MDA(H)	ALS out
A	454' (200')			610' (356')	830' (576')	
B				1200m	1600m	
C	800m	1200m	NOT AUTH			
D				1600m	2000m	

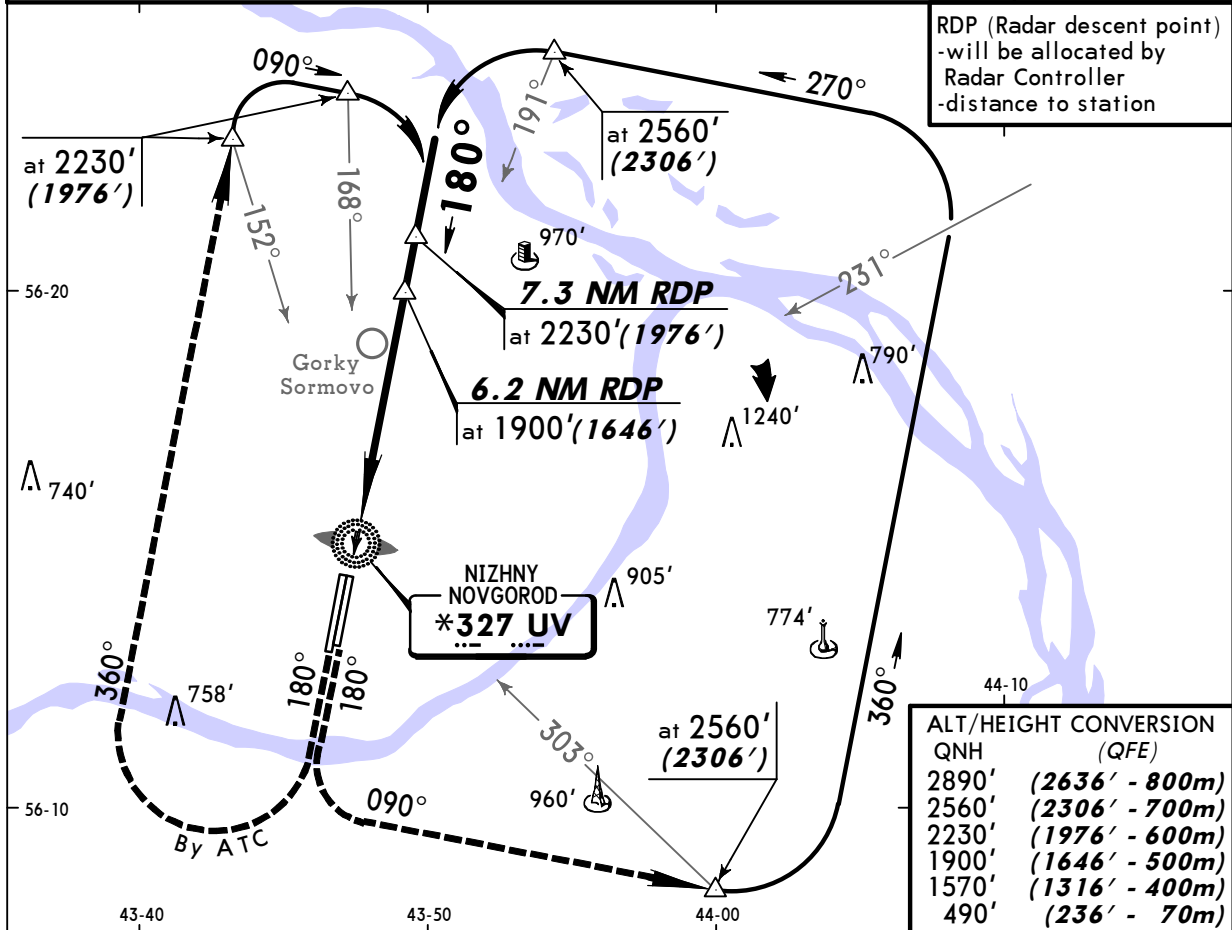
CHANGES: MAP position.

UWGG/GOJ
STRIGINO

JEPPESEN NIZHNY NOVGOROD, RUSSIA
17 OCT 08 (16-1)
NDB Rwy 18L

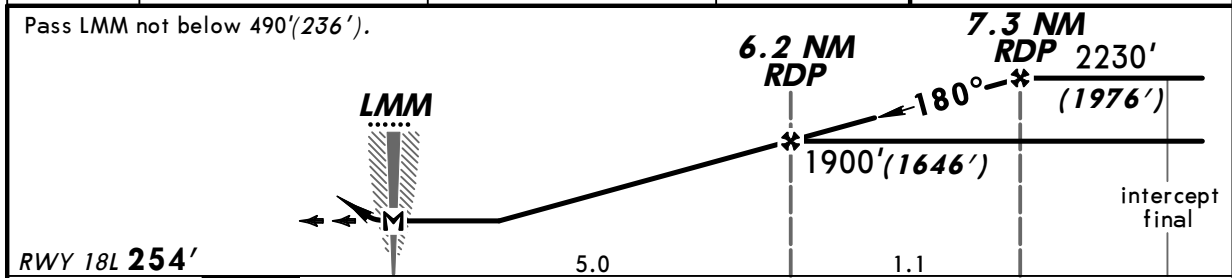
BRIEFING STRIP™

ATIS 127.8	NIZHNY Approach 124.7 126.0	NIZHNY Radar 120.8	NIZHNY Tower 120.4	Ground 121.8
NDB UV *327	Final Apch Crs 180°	Minimum Alt (CONDITIONAL) Refer to Profile	MDA(H) (CONDITIONAL) 700'(446')	Apt Elev 256' RWY 254'
MISSED APCH: LEFT HAND: Climb on 180° to 1570'(1316'), then turn LEFT onto 090° climbing to 2560'(2306'), then as directed. RIGHT HAND: Climb on 180° to 1570'(1316'), then turn RIGHT onto 360° climbing to 2230'(1976'), then as directed.				<p>MSA UV NDB</p>
Alt Set: MM (hPa on req) QNH on req(QFE) Trans level: FL 39 Trans alt: 2890'(2636')				



RDP (Radar descent point)
-will be allocated by
Radar Controller
-distance to station

ALT/HEIGHT CONVERSION	
QNH	(QFE)
2890'	(2636' - 800m)
2560'	(2306' - 700m)
2230'	(1976' - 600m)
1900'	(1646' - 500m)
1570'	(1316' - 400m)
490'	(236' - 70m)



Pass LMM not below 490'(236').							Refer to Missed Apch above
Gnd speed-Kts	70	90	100	120	140	160	
Descent Gradient 4.7%	333	428	476	571	666	762	
MAP at LMM							

STRAIGHT-IN LANDING RWY 18L	
With FAF MDA(H) 700'(446')	W/o FAF MDA(H) 1250'(996')
A	2000m
B	2400m
C	4800m
D	

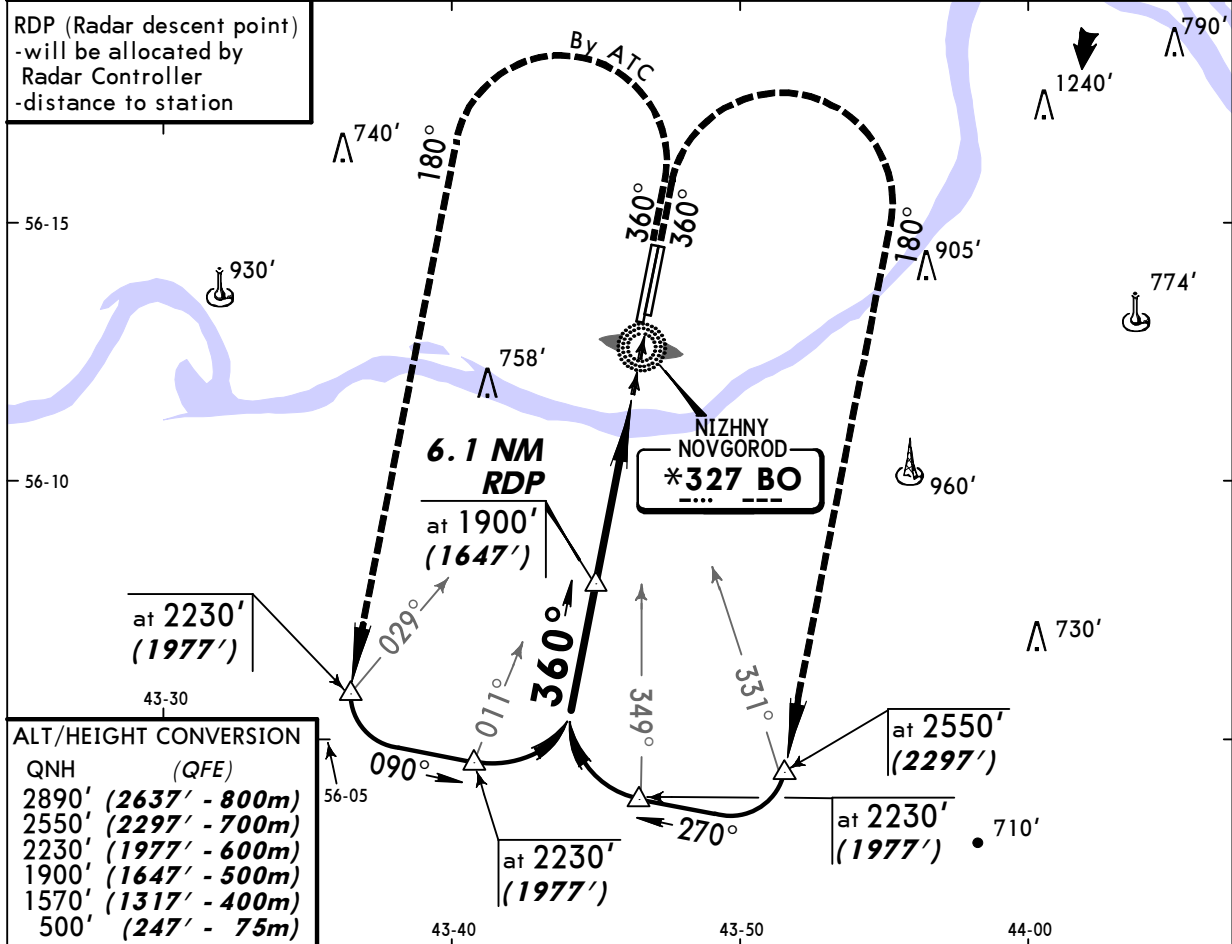
PANS OPS

UWGG/GOJ
STRIGINO

JEPPESEN NIZHNY NOVGOROD, RUSSIA
17 OCT 08 (16-2) **NDB Rwy 36R**

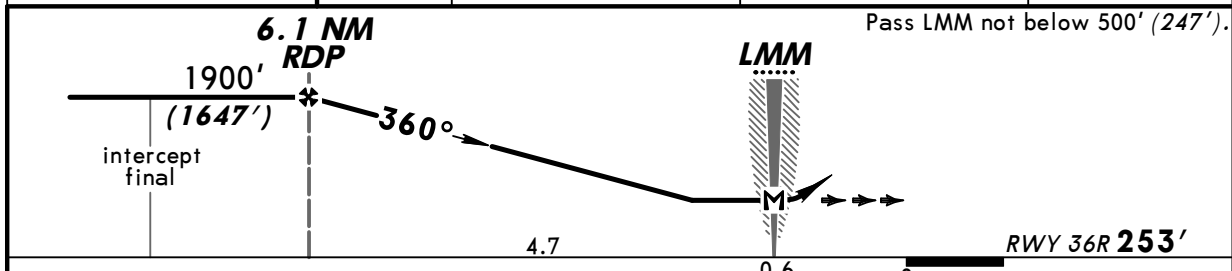
BRIEFING STRIP™

ATIS 127.8	NIZHNY Approach 124.7 126.0	NIZHNY Radar 120.8	NIZHNY Tower 120.4	Ground 121.8
NDB BO *327	Final Apch Crs 360°	Minimum Alt 6.1 NM RDP 1900' (1647')	MDA(H) (CONDITIONAL) 920' (667')	Apt Elev 256' RWY 253'
MISSED APCH: RIGHT HAND: Climb on 360° to 1570' (1317'), then turn RIGHT onto 180° climbing to 2550' (2297'), then as directed. LEFT HAND: Climb on 360° to 1570' (1317'), then turn LEFT onto 180° climbing to 2230' (1977'), then as directed.				
Alt Set: MM (hPa on req) QNH on req(QFE) Trans level: FL 39 Trans alt: 2890' (2637')				MSA BO NDB



ALT/HEIGHT CONVERSION

QNH	(QFE)
2890' (2637' - 800m)	
2550' (2297' - 700m)	
2230' (1977' - 600m)	
1900' (1647' - 500m)	
1570' (1317' - 400m)	
500' (247' - 75m)	



Gnd speed-Kts	70	90	100	120	140	160	Refer to Missed Apch above
Descent Gradient 4.9%	347	447	496	595	695	794	
MAP at LMM							

STRAIGHT-IN LANDING RWY 36R

	With 6.1 NM RDP MDA(H) 920' (667')	W/o 6.1 NM RDP MDA(H) 1170' (917')	
A			
B	1600m	2000m	
C	2800m	4400m	
D	3200m	4800m	

PANS OPS